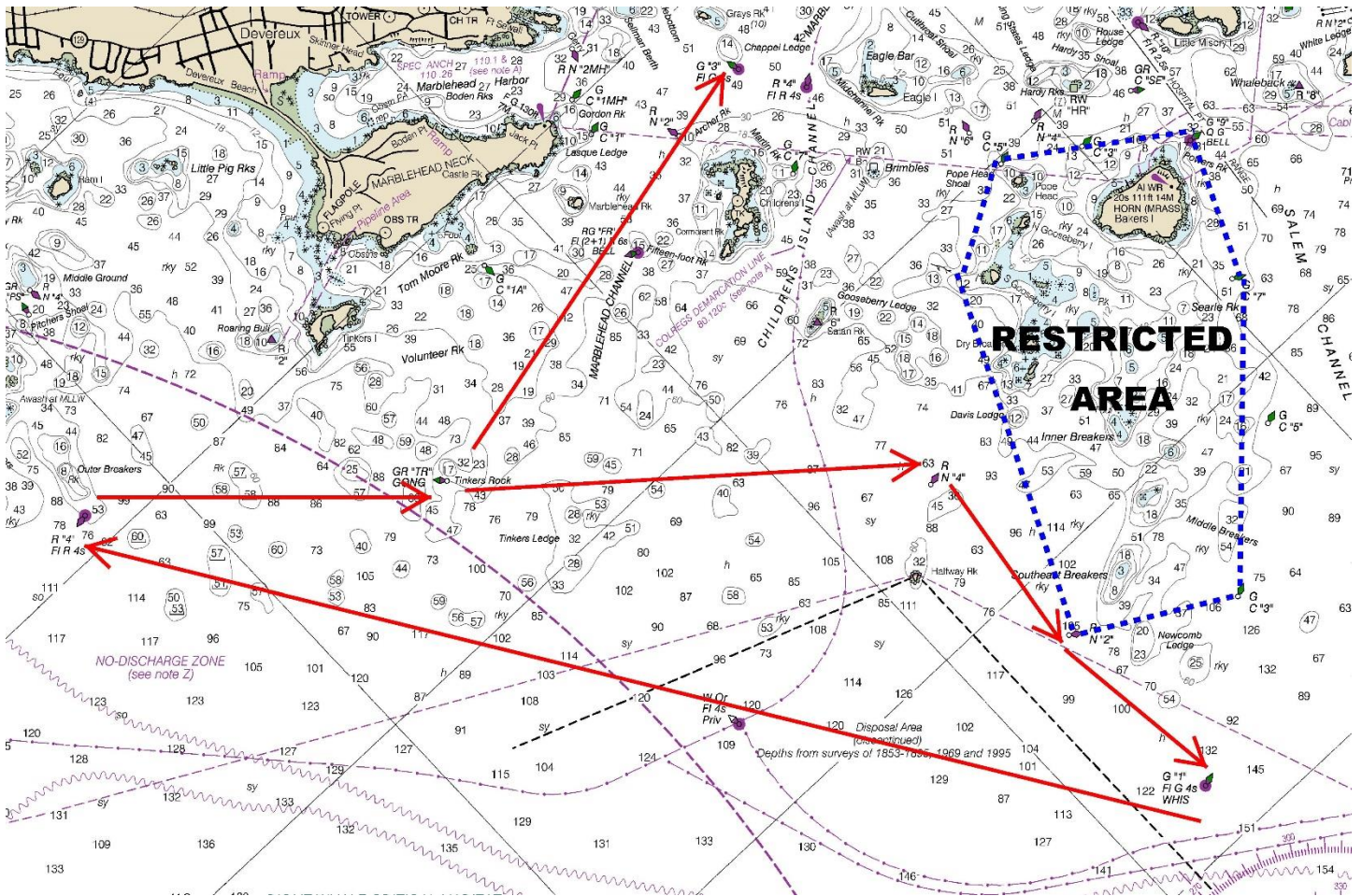


Mass Bay Shorthanded Regatta July 2, 2023

Course # 5

Distance: 13.1 nm

Mark	MBSA ID	Type	Description	Dist. To: nm	Leave Mark to
1	D	Start	TINKERS ROCK GONG GR "TR"	0.00	
2	6	Mark	CHILDREN'S I, CHAN. NUN (NR HALF RK) RN "4"	2.2	Stbd.
3		Mark	R "2" Childrens Island Channel Buoy 2, Southwest of Newcomb Ledge must be left to Port		Port
4	B	Mark	NEWCOMB LEDGE WHISTLE G "1"	1.8	Stbd.
5	G	Mark	GREAT PIG ROCKS BUOY R "4"	5.2	Stbd.
6	D	Mark	TINKERS ROCK GONG GR "TR"	1.6	Port
7	2	Finish	MARBLEHEAD CHANNEL (CHAPPEL LG) G "3"	2.3	Port.



*****The Course & Chart depictions, outlined above are for reference only and **SHALL NOT** be used for navigation*****