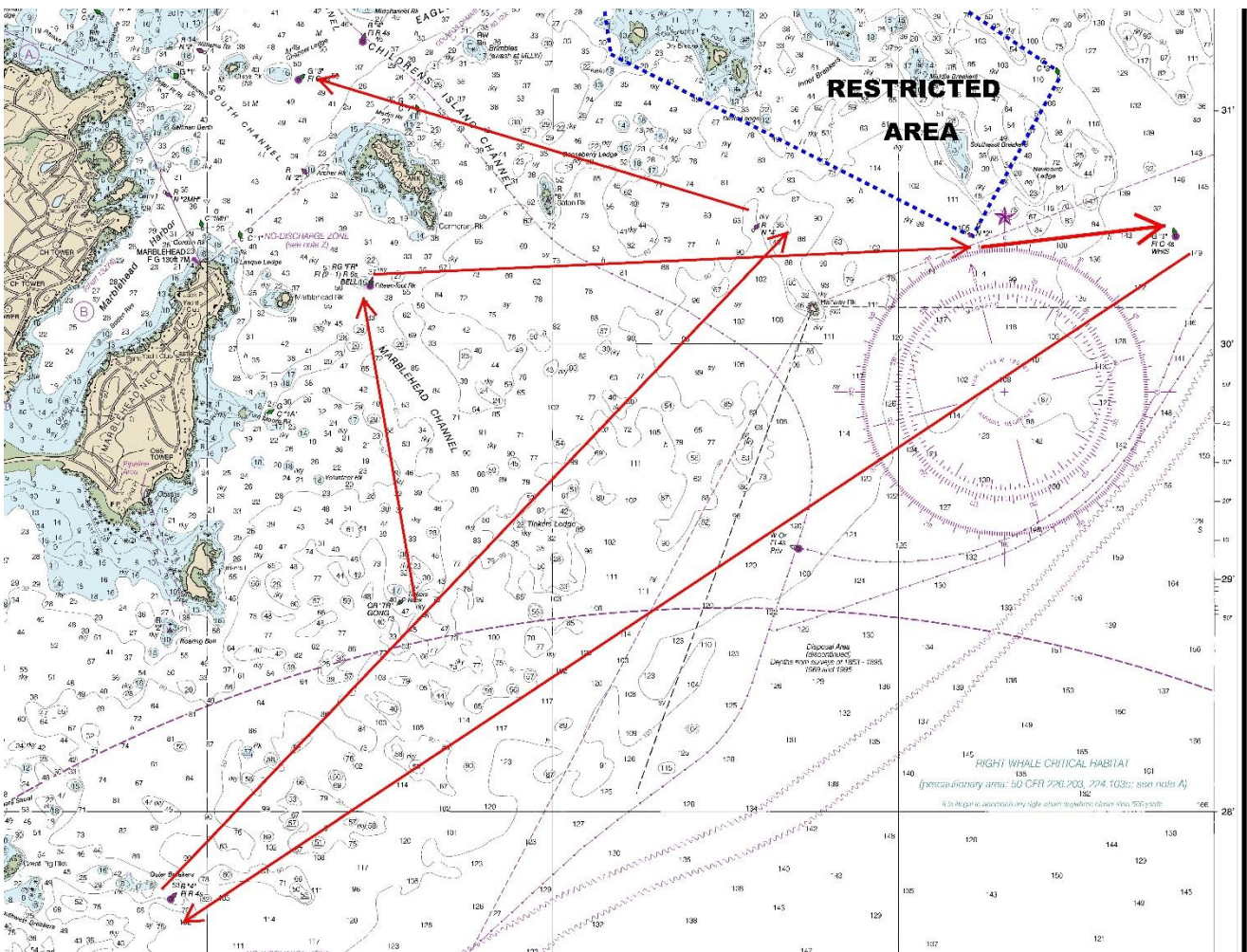


# Mass Bay Shorthanded Regatta, July 2, 2023

**Course # 3**

**Distance: 15.8 nm**

Mark	MBSA ID	Type	Description	Dist. To (NM)	Leave Mark to
1	D	Start	TINKERS ROCK GONG GR "TR"	0.00	
2	3	Mark	MARBLEHEAD CHANNEL BELL (15-FT RK)	1.3	Stbd.
3		Mark	<b>R "2" Childrens Island Channel Buoy 2, Southwest of Newcomb Ledge must be left to Port</b>		Port
4	B	Mark	NEWCOMB LEDGE WHISTLE G "1"	3.5	Stbd.
5	G	Mark	GREAT PIG ROCKS BUOY R "4"	5.2	Stbd.
6	6	Mark	CHILDREN'S I CHAN. NUN RN "4"	3.8	Port
7	2	Finish	MARBLEHEAD CHANNEL (CHAPPEL LG) G "3"	2.0	Port



\*\*\*\*\*The Course & Chart depictions, outlined above are for reference only and **SHALL NOT** be used for navigation\*\*\*\*\*