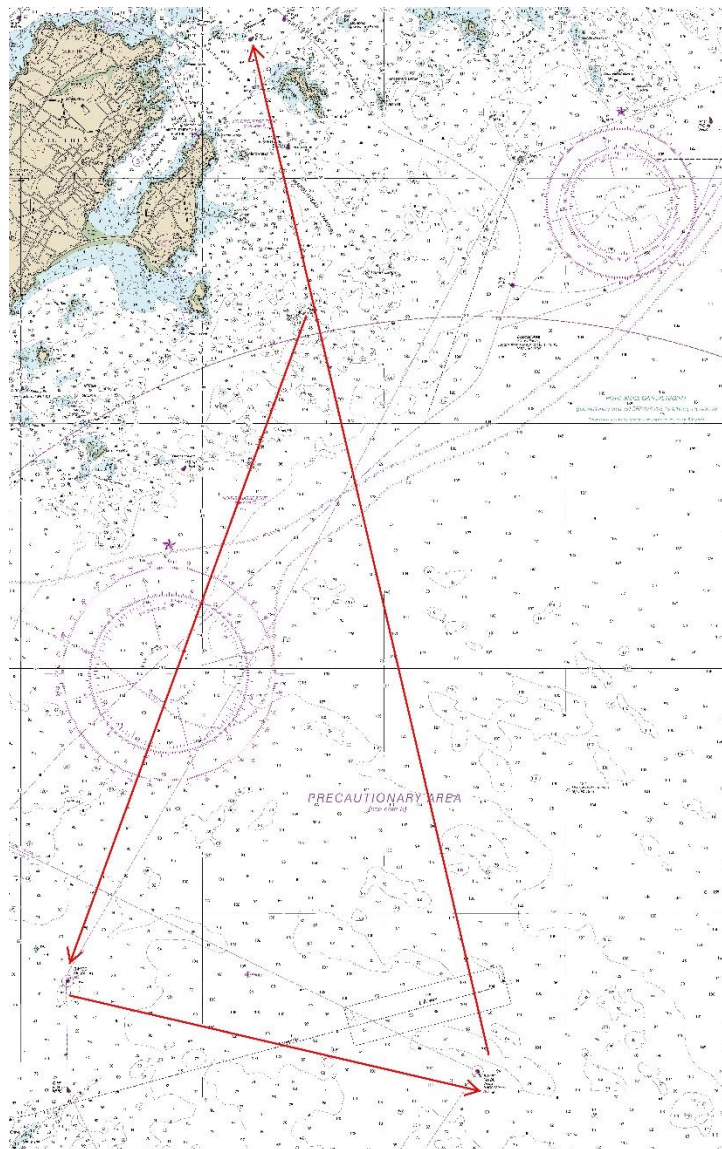


# Mass Bay Shorthanded Regatta, July 2, 2023

Course # 2

Distance: 17.8nm

Mark	MBSA ID	Type	Description	Dist To	Leave Mark to:
1	D	Start	TINKERS ROCK GONG GR "TR"	0.00	
2	J	Mark	BOSTON APPROACH BUOY RW "BG"	5.8	Port
3	K	Mark	BOSTON LIGHTED WHISTLE RW "B"	3.4	Port
4	D	Finish	MARBLEHEAD CHANNEL (CHAPPEL LG) G "3"	8.6	Port



\*\*\*\*\*The Course & Chart depictions, outlined above are for reference only and **SHALL NOT** be used for navigation\*\*\*\*\*